

Comfort IR

weCO
international inc

Silent ~ Odorless ~ Efficient

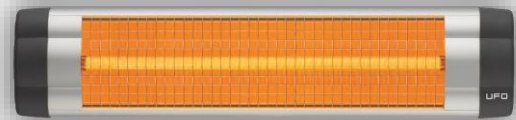
CIR 2

- 1200W 115v (11 amps)
- Polished stainless steel finish
- Available with high efficiency black glazed ceramic infrared elements
- Supplied with 4.5' power cord (no plug)
- Dimension 20" x 4" x 3.5" Approx. 7 lbs.
- Mounts easily to any finished or unfinished wall (brackets included)
- Covers 10'x10' enclosed area comfortably



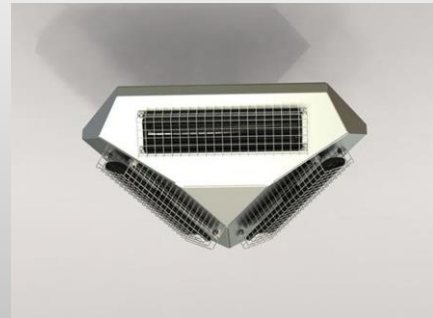
UFO S-15

- 1500W 110v (12.5 amps)
- Anodized aluminum finish
- Infrared heater with adjustable thermostat
- Supplied with 6' power cord (with plug)
- Dimension 29" x 3.5" x 7" 7 lbs.
- Easily mounts to any finished or unfinished wall with supplied brackets
- Heating Range- Indoors 161 sq. ft; Outdoors 108 sq.ft.(based on average temps)



Comfort IR 360

- 1500W 115v (14 amp)
- Polished stainless steel finish
- Available with high efficiency black glazed ceramic infrared elements
- Supplied with 4.5' power cord (no plug)
- Dimension 18" x 18" x 6.5" Approx. 8 lbs.
- Adjustable suspension from center of unit
- Covers up to 12'x12' enclosed area comfortably

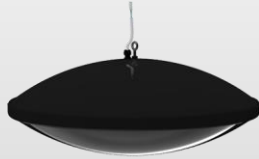


Comfort IR

weCO
international inc

Silent ~ Odorless ~ Efficient

Eclipse-B Eclipse-W



- 2400W 240V (11.4 amps)-Black
- 1800W 240V (7.5 amps)-White
- Both have a coated mild steel housing frame with four white glazed ceramic elements(internal)
- Zero light, ceiling mounted designer space heater
- Supplied with flexible 5' power cord
- Both are 11.9" x 31.49" 61.6 lbs.
- Eclipse-B will heat enclosed indoor area of 129-215 sq. ft. from a height of up to 9'
- Eclipse-W will heat an enclosed indoor area of 86-161 sq. ft. from a height of up to 8'

Control

14-4100 120V
14-4200 240V



- Each gang box has a 15 amp maximum load
- #14-4100 for 120V
- #14-4200 for 240V
- Each box is 4" x 2-1/8" x 2-1/4"
- Each has a SS plate 5-1/2" x 3-5/8"

Applications

Bars

Garages
Sunroom
Utility Room
Bathroom
Storage Shed

Restaurants

Barns
Basement
Laundry Room
Dog House
Hot Tub Area

Outdoor Dining

Lean-tos
Dugouts
Foyer
Pump House
Gazebo

Patios
Pantry
Breezeway
Bus Stops
Home Offices

Comfort IR

Silent ~ Odorless ~ Efficient



Ordering

If you would like to place an order, please complete the below information and fax it to 810.686.7564 or e-mail orders@wecointernational.com. We will confirm your order once it's received. Shipping will be added to your order. Thank You!

	Customer Information:	Ship to:
Name		
Address 1		
Address 2		
City, State Zip		
Phone number		
E-mail address		

Part Number	Description	Price	QTY
CIR-2-1200/115-BB	CIR -2 1200W 115V Stainless housing with black heaters-11A	\$250.00	
UFO S-15	UFO S-15 1500W Anodized aluminum infrared heater-12.5A	\$250.00	
CIR-360-1500/115-CERAMIC	CIR-3 60 1500W 115V Stainless with ceramic heaters- 14A	\$450.00	
ECLIPSE-B	ECLIPSE-B 2400W Coated, mild steel housing infrared heater	\$1400.00	
ECLIPSE-W	ECLIPSE-W 1800W Coated, mild steel housing infrared heater	\$1400.00	
14-4100 for 120V 14-4200 for 240V	Control gang box-Each has a 15A maximum load	\$125.00 EA	

Name on Card	Card Number	Exp Date	CVV Code (3 digit on back of card)
	-----	-- / --	---

For questions, please contact:
WECO International, Inc.

235 S. Seymour Rd.
Flushing, MI 48433

Phone: 810.686.7221